

# SPARE PARTS SECTION

## PEDESTAL MILL DRILL

**Model. DMF-44**

Order Code D185

*Edition No : DMF-44-1*

*Date of Issue : 07/2020*

The following section covers the spare parts diagrams and lists that were current at the time this manual was originally printed. Due to continuous improvements of the machine, changes may be made at any time without notification.

### HOW TO ORDER SPARE PARTS

1. Have your machines **model number, serial number & date of manufacture** on hand, these can be found on the specification plate mounted on the machine
2. A scanned copy of your parts list/diagram with required spare part/s identified.

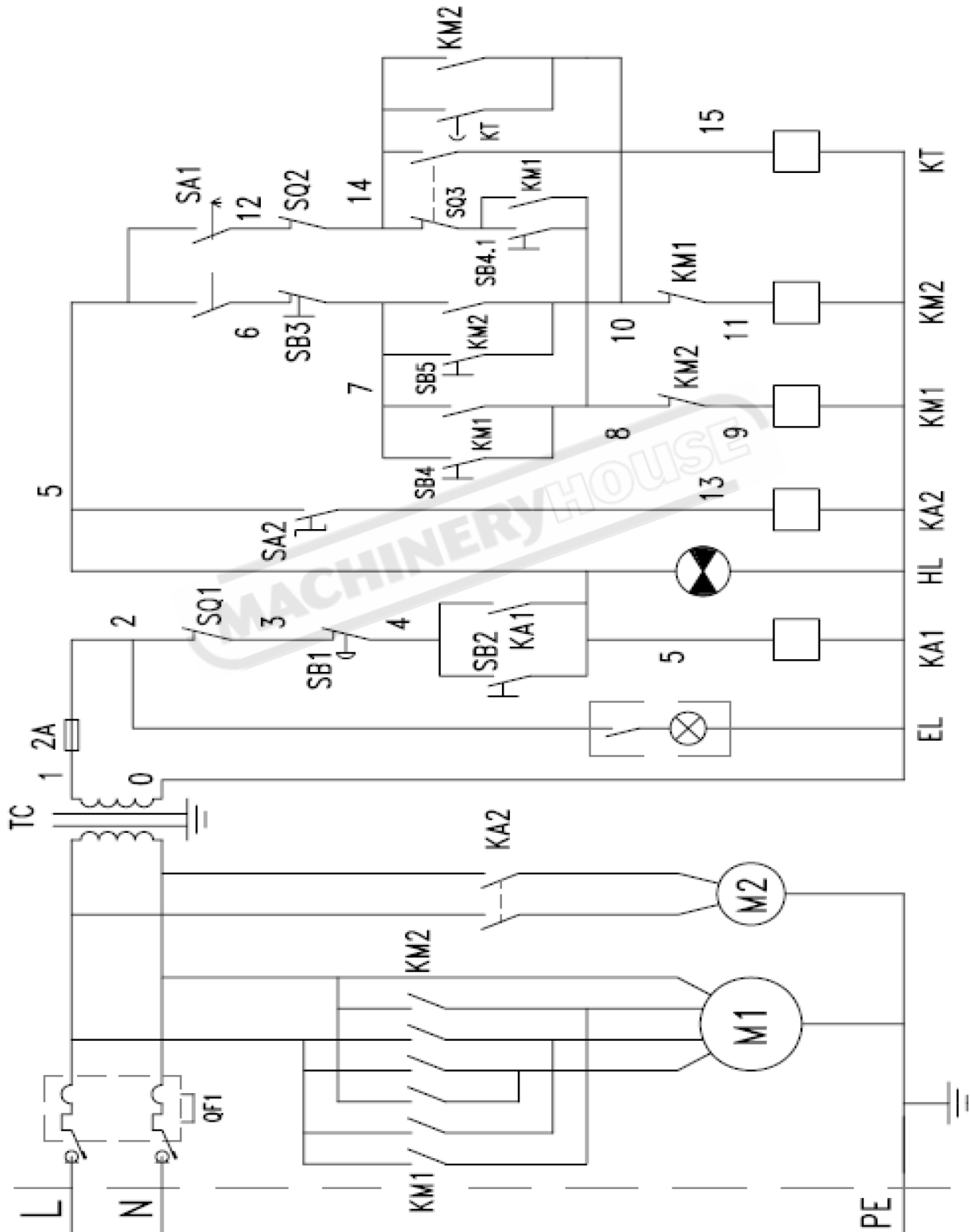
**NOTE: SOME PARTS MAY ONLY BE AVAILABLE AS AN ASSEMBLY**

3. Go to [www.machineryhouse.com.au/contactus](http://www.machineryhouse.com.au/contactus) and fill out the inquiry form attaching a copy of scanned parts list.

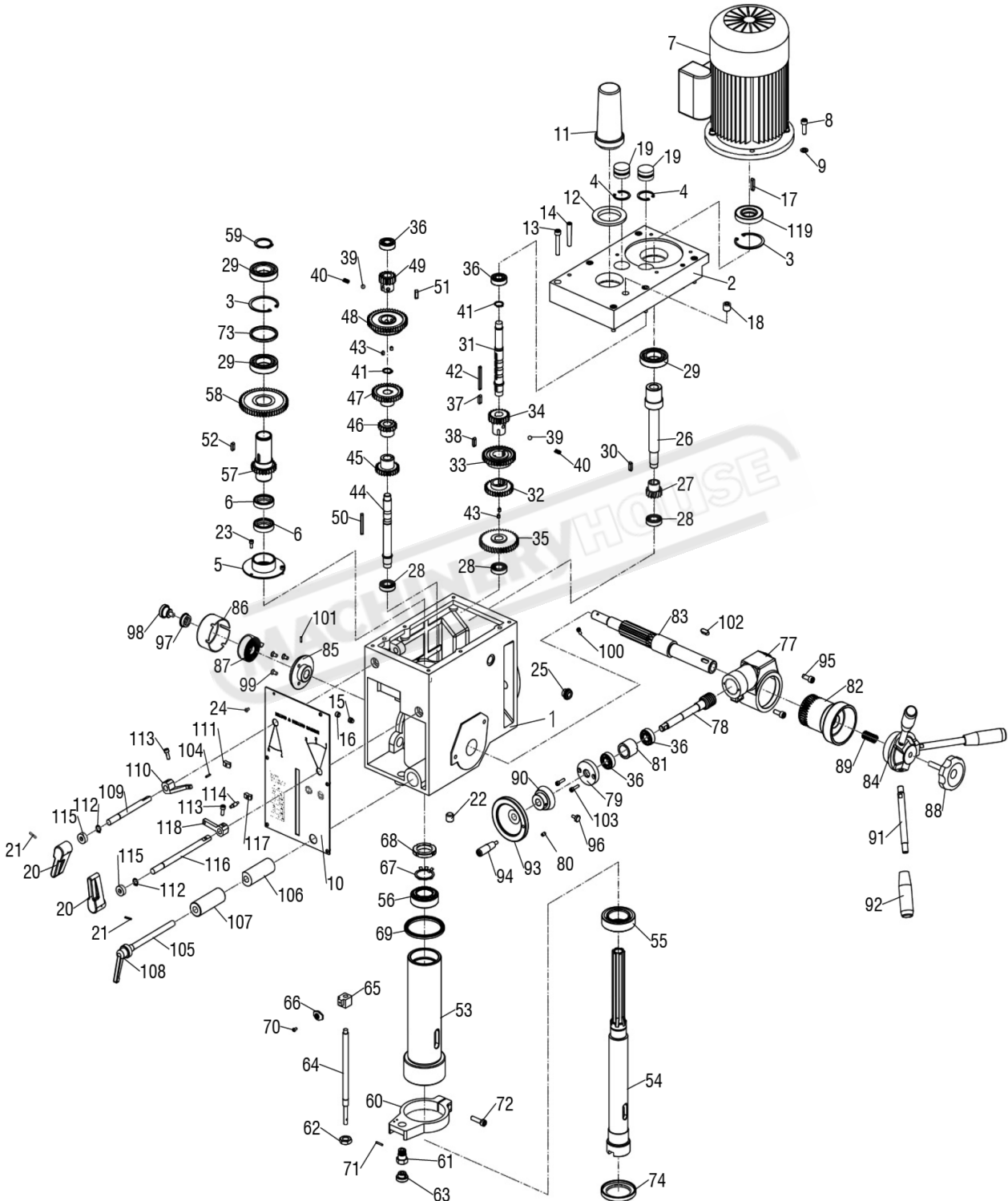
### CONTENTS

240 Volt Wiring Diagram.....	30
Head Spare Parts Diagram.....	31
Head Spare Parts List.....	32
Table & Column Spare Parts Diagram.....	34
Table & Column Spare Parts List.....	35

**240V WIRING DIAGRAM**



**DMF-44 HEAD SPARE PARTS DIAGRAM**



**NOTE: SOME INDIVIDUAL PARTS MAY ONLY BE AVAILABLE AS AN ASSEMBLY**

**DMF-44 HEAD SPARE PARTS LIST**

ITEM	DESCRIPTION	QTY.	ITEM	DESCRIPTION	QTY.
1	20010B HEAD BODY	1	37	6X14 KEY	1
2	20011B HEAD BODY COVER	1	38	6X28 KEY	1
3	Ø 62 INT RETAINING RING	2	39	Ø 8 BALL	2
4	Ø 35 INT RETAINING RING	2	40	SPRING	2
5	20018B AIRTIGHT BASE	1	41	Ø18 EXT RETAINING RING	2
6	45X35X10 AIRTIGHT RING	2	42	5X50 KEY	1
7	1.5KW MOTOR	1	43	M6X12 SCREW	4
8	M8X25 SCREW	1	44	20107B III SHAFT	1
9	M8 WASHER	1	45	20109-B GEAR Z25	1
10	20201 PLATE	1	46	20110-2-B GEAR Z18	1
11	20304-1B ARBOR BOLT COVER	1	47	20112-B GEAR Z32	1
12	20304-2B ARBOR BOLT COVER BASE	1	48	20113-B GEAR Z43	1
13	M8X45 SCREW	6	49	20115-B GEAR Z16	1
14	8H40 PIN	2	50	5X50 KEY	1
15	M10X10 SCREW	1	51	6X18 KEY	1
16	M10X8 SCREW	1	52	6X18 KEY	1
17	6X28 KEY	1	53	20019 SPINDLE SLEEVE	1
18	ZG3/8" BOLT	1	54	20104B SPINDLE	1
19	20020B CAP	2	55	30207 /P5 BEARING	1
20	20307B SPEED LEVER	2	56	30206 /P5 BEARING	1
21	3X18 PIN	2	57	20114-B SPLINED SLEEVE Z25	1
22	ZG3/8" OIL PLUG	1	58	20116-B GEAR Z53	1
23	M5X10 SCREW	3	59	Ø35 EXT RETAINING RING	1
24	M4X8 SCREW	6	60	20012 FEED BASE	1
25	M18X1.5 OIL POINTER	1	61	20128 SUPPORT BASE	1
26	20105BI SHAFT	1	62	20129 NUT	1
27	20105-1-B GEAR Z14	1	63	20130 KNOB	1
28	6003 / P5 BEARING	3	64	20131 GRADUATED ROD	1
29	6007 / P5 BEARING	3	65	20021 FIXED BOLT	1
30	5X25 KEY	1	66	20132 SCALE BOARD	1
31	20106BII SHAFT	1	67	Ø30 LOCK WASHER	1
32	20108-B GEAR Z29	1	68	M30X1.5 LOCK NUT	1
33	20110-1-B GEAR Z35	1	69	20308 RUBBER WASHER	1
34	20111-B GEAR Z21	1	70	M4X8 SCREW	1
35	20106-1-B GEAR Z41	1	71	3X18 SPLIT PIN	1
36	6202 / P5 BEARING	4	72	M8X30 BOLT	1

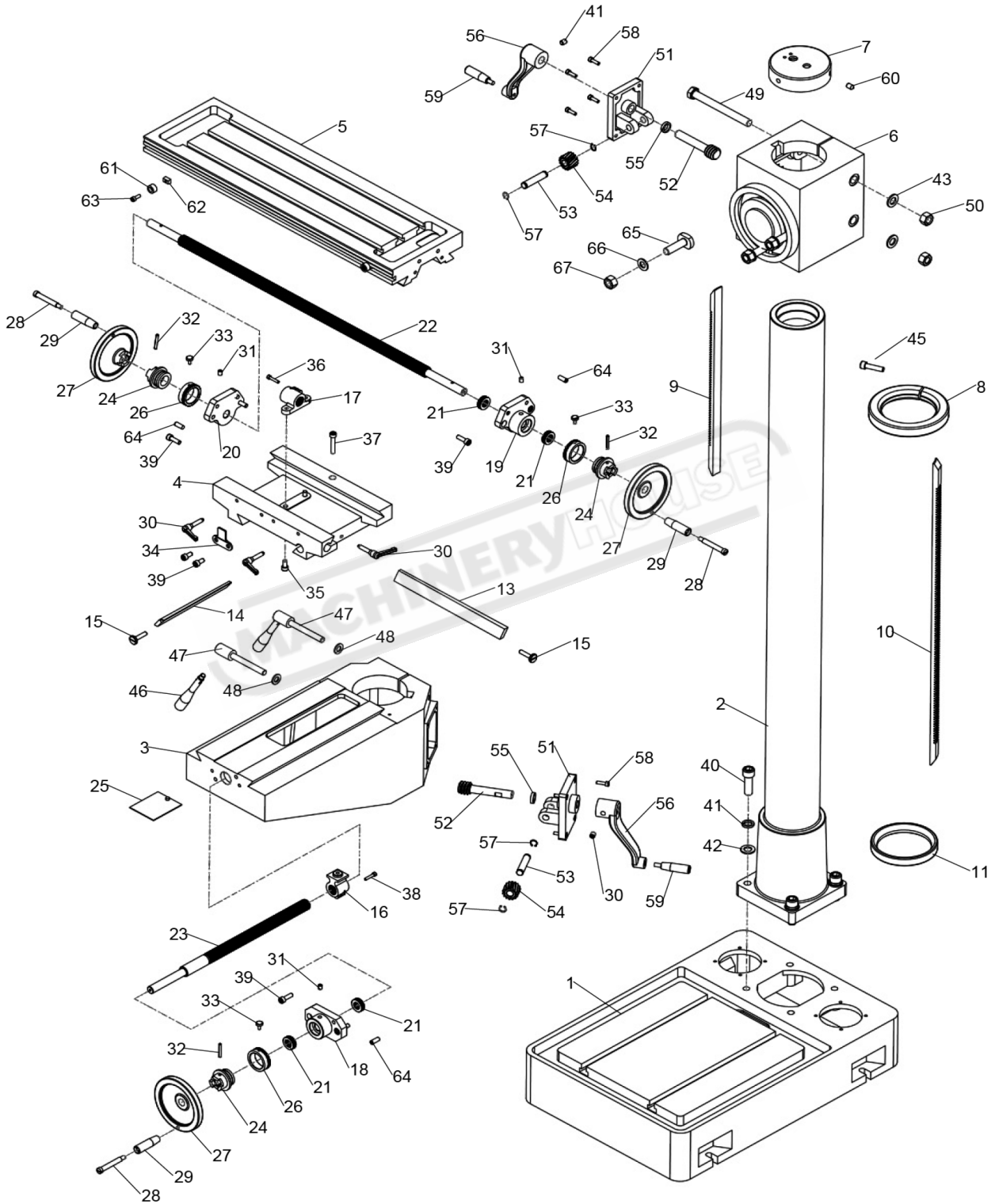
**NOTE: SOME INDIVIDUAL PARTS MAY ONLY BE AVAILABLE AS AN ASSEMBLY**

**DMF-44 HEAD SPARE PARTS LIST**

ITEM	DESCRIPTION	QTY.	ITEM	DESCRIPTION	QTY.
73	20024B SEPARATING RING	1	108	ADJUST HANDLE	1
74	20133B BEARING COVER	1	109	20125B LEVER SHAFT	1
75	M5X6 SCREW (R8)	1	110	20022-1B LEVER	1
76	M5X4 PIN (R8)	1	111	20204-2B LEVER BRACKET	1
77	20015 WORM WHEEL BOX	1	112	12 EXT RETAINING RING	2
78	20119 WORM SHAFT	1	113	M6X16 SCREW	2
79	20302 WORM COVER	1	114	20204-3B LEVER ROD	1
80	M6X12 SCREW	1	115	12X22X8 OIL SEAL	2
81	20120 SEPARATING RING	1	116	20126B LONG LEVER SHAFT	1
82	20016 WORM WHEEL	1	117	20204-1B LEVER BRACKET	1
83	20117 PINION SHAFT	1	118	20022-2B LEVER	1
84	20013 HANDLE BODY	1	119	35X62X10 OIL SEAL	1
85	20118 SPRING BASE	1			
86	20123 SPRING CAP	1			
87	20122 SPRING PLATE	1			
88	20303 BIG RIPPLE HANDLE	1			
89	COMPRESSION SPRING	1			
90	20017 GRADUATED PLATE	1			
91	20121B HANDLE ROD	1			
92	20301B HANDLE BALL	1			
93	20306B HANDLE WHEEL	1			
94	20305-B HANDLE ROD	1			
95	M8X25 SCREW	2			
96	10107 SCREW	1			
97	203063 WASHER	1			
98	203066 SCREW	1			
99	M6X12 SCREW	3			
100	M5X12 SCREW	1			
101	3X12 PIN	2			
102	8X20 KEY	1			
103	M5X20 SCREW	2			
104	3X15 PIN	1			
105	20124B FIXED BOLT	1			
106	20203B FIXED TIGHT BLOCK	1			
107	20202B FIXED TIGHT BLOCK	1			

**NOTE: SOME INDIVIDUAL PARTS MAY ONLY BE AVAILABLE AS AN ASSEMBLY**

**DMF-44 TABLE & COLUMN SPARE PARTS DIAGRAM**



**NOTE: SOME INDIVIDUAL PARTS MAY ONLY BE AVAILABLE AS AN ASSEMBLY**

**DMF-44 TABLE & COLUMN SPARE PARTS LIST**

ITEM	DESCRIPTION	QTY.	ITEM	DESCRIPTION	QTY.
1	10002/40H BASE	1	45	SCREW M10 X 40	1
2	10001/40H COLUMN	1	46	10023/40H HANDLE	2
3	10003/40H LIFTING TABLE	1	47	10022/40H ADJUST BOLT	2
4	10005/40H SLIP SADDLE	1	48	WASHER 12	2
5	10004/40H WORK TABLE	1	49	BOLT M16 X 190	2
6	10016/40H ELEVATING BODY	1	50	NUT M16	2
7	10014/40 COLUMN LID	1	51	10017/40 BRACKET	2
8	10012/40H LOCKED GUIDE RING	1	52	10112/40 WORM SHAFT	2
9	10014/40H UP RACK	1	53	10113/40 SMALL SHAFT	2
10	10015/40H LOW RACK	1	54	HELICAL GEAR	2
11	02-04/ZX30 GUIDE RING	1	55	10201/40 WASHER	2
12			56	10018/40 ROCK HANDLE	2
13	10006/40H GIB STRIP	1	57	RETAINING RING	4
14	10007/40H GIB STRIP	1	58	SCREW M6 X 25	8
15	10106/40 ADJUST SCREW	2	59	TURN HANDLE	2
16	10203/40 GUIDE SCREW NUT	1	60	SCREW M8X 12	3
17	10202/40 GUIDE SCREW	1	61	10109/40 FIXED BLOCK SUPPORT	2
18	10021/40 GUIDE SCREW SUPPORT	1	62	NUT M6	2
19	10020/40 RIGHT SUPPORT	1	63	SCREW M6 X 16	2
20	10019/40 LEFT SUPPORT	1	64	PIN 8 X 25	6
21	BEARING 51103	4	65	T BOLT M14X55	3
22	10008/40H TABLE SCREW	1	66	WASHER M14	3
23	10009/40H BASE SCREW	1	67	NUT M14	3
24	10102/40H DIAL CLUTCH	2			
25	10110/40 WAY COVER	1			
26	10111/40 GUADUATION PLATE	3			
27	10301/40 HANDWHEEL	3			
28	20305-2B/40 SCREW	3			
29	20305-1B-40 TURN HANDLE	3			
30	ADJUST HANDLE	3			
31	OIL CUP8	3			
32	PIN 5X35	3			
33	10107/40 SCREW	3			
34	10105/40 FIXED BLOCK	1			
35	SCREW M8 X 16	2			
36	SCREW M5 X 25	1			
37	SCREW M8 X 45	1			
38	SCREW M5 X 25	1			
39	SCREW M8 X 20	8			
40	BOLT M14 X 60	4			
41	LOCK WASHER 14	4			
42	FLAT WASHER 14	6			
43	FLAT WASHER 16	2			

**NOTE: SOME INDIVIDUAL PARTS MAY ONLY BE AVAILABLE AS AN ASSEMBLY**